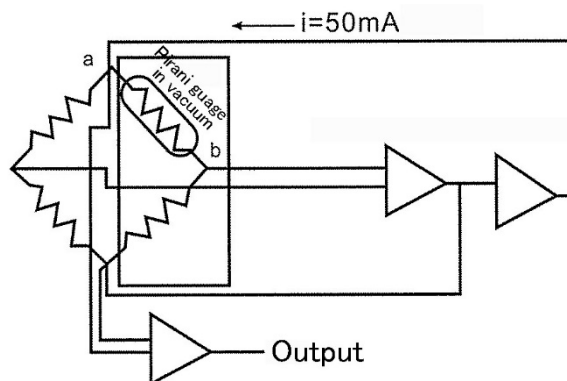
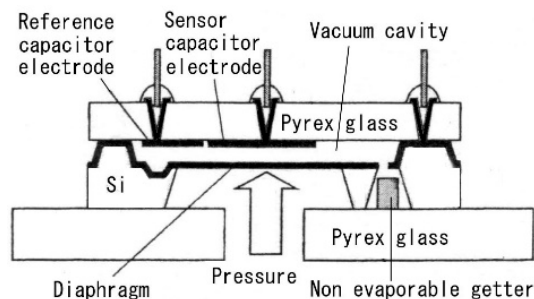
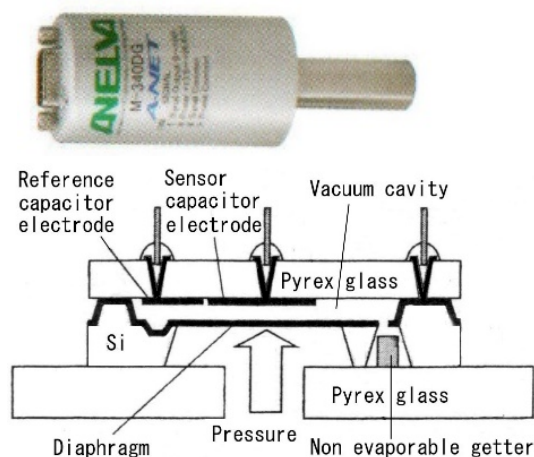
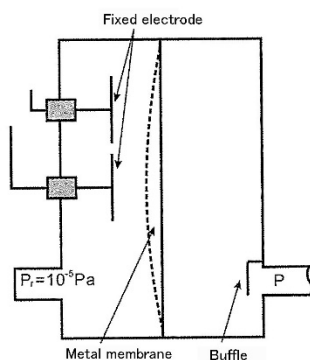


## 8 Vacuum gauges and quadrupole mass spectrometer



Pirani gauge (exhibited)



Diaphragm vacuum gauge (left exhibited)

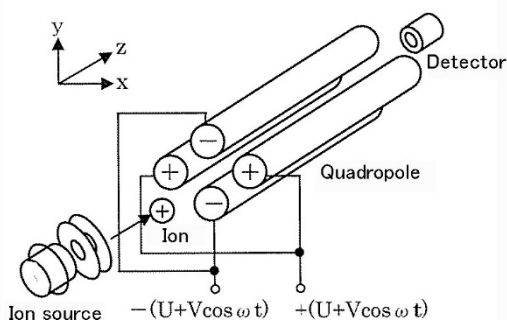
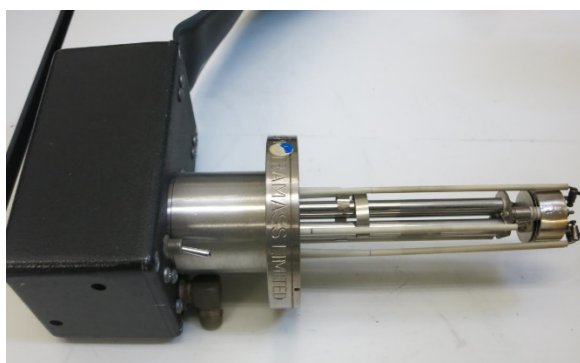
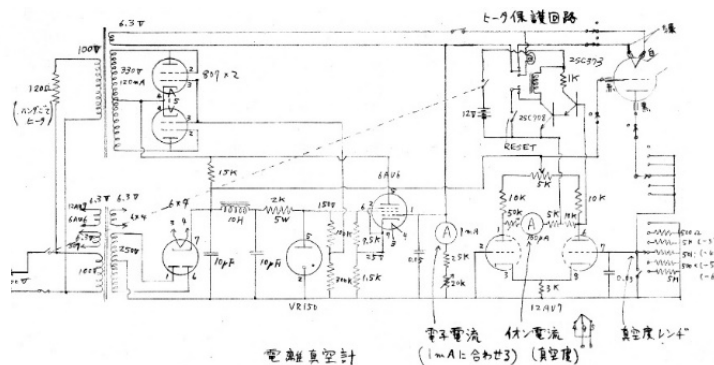


Thermal electron emission from heater

Molecules are ionized by electron

Ion current is detected by anode

Ionization vacuum gauge (exhibited) and circuit



Quadrupole mass spectrometer (exhibited)