

1 Design (1) CAD

Design and fabrication of CMOS IC using equipment made in-house

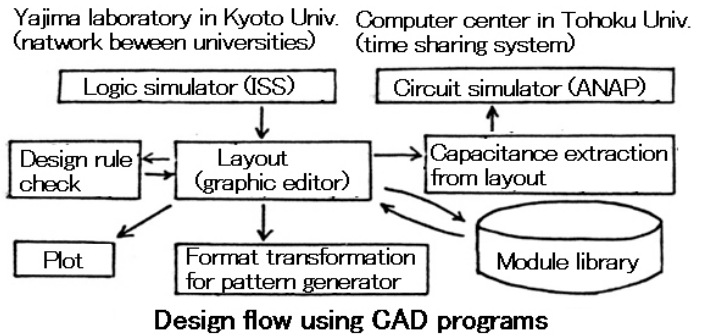
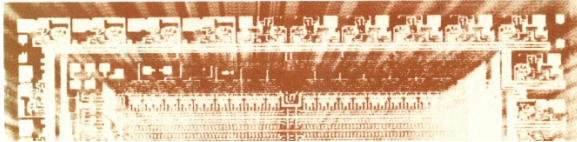
半導体工学シリーズ ⑦

半導体集積回路設計の基礎

西澤潤一編 江刺正喜著

培風館

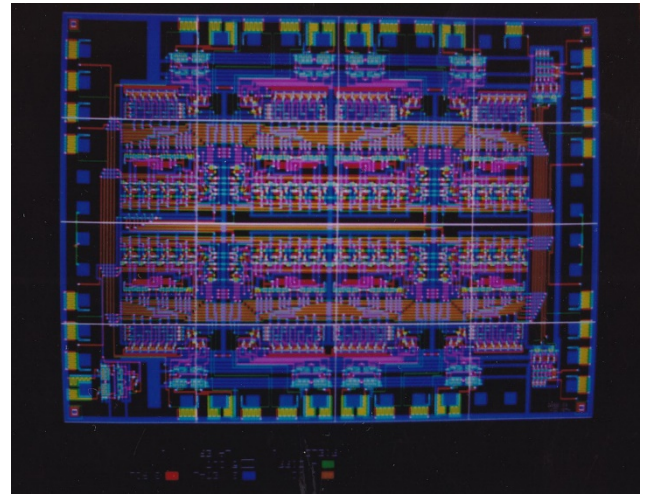
1986年



Text book in Japanese “Basics of integrated circuit design” M. Esashi (1986) Baifukan



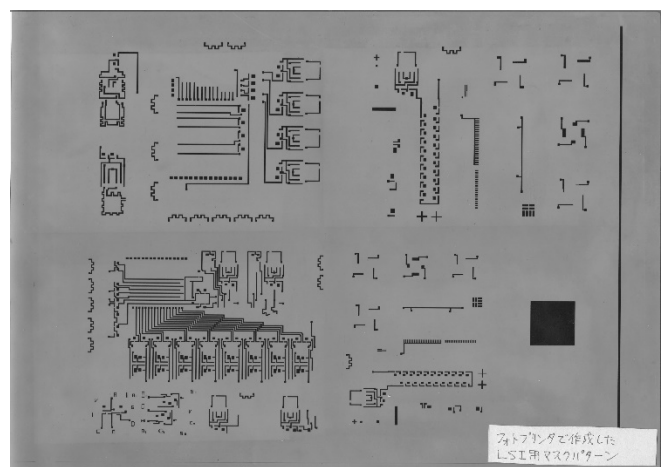
Graphic display connected to LSI11 (DEC) for LSI design



Layout editor programed by M. Esashi using Fortran



Photo-printer for printing out the layout pattern



Mask negative printed out on a transparent film

(M. Esashi : Prototyping and Education of LSI in University, J. of the IECE, 68, 1 (1985)50—52) (in Japanese)

(M. Esashi, A. Komatsu, M. Asibe, M. Ohtomo : Design/Fabrication System for Custom LSI (1) (Overview of the System), (2) (Design Environment), (3) (NMOS process and Evaluation), S58 Convention of the IECE, 401~3 (1983)) (in Japanese)

(M. Esashi, A. Masuda, T. Matsuo : CAD System for LSI Design, Joint Convention of Electrical Academic Societies in Tohoku Region, 2D21 (1984))(in Japanese)