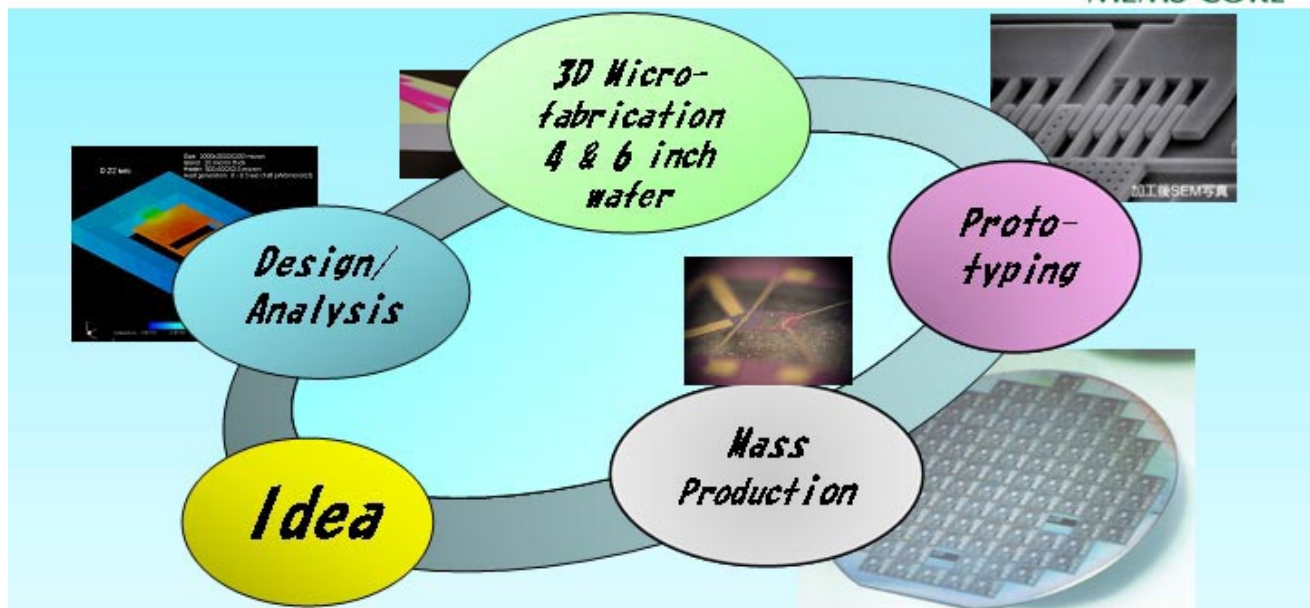


## Turn the Idea into Product

Always with you



### Company Profile

Name : MEMS-CORE Co.Ltd.

Capital : 60,000,000 JPY

Foundation : Dec. 2001

CEO : Koji Homma

Address : 3-11-1 Akedouri Izumi-ku Sendai Miyagi, 981-3206, JAPAN

Web site : [www.mems-core.com](http://www.mems-core.com)

Tel.: +81-22-777-8717

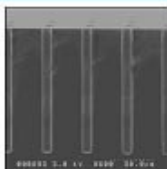
### Company Policy

We support your development of new devices by our Q-TAT process.

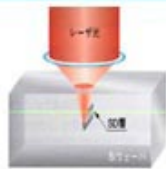
We totally support from feasibility study to mass-production.

Our intimate relation with Universities and Laboratories helps us.

### Core Technology



Deep RIE



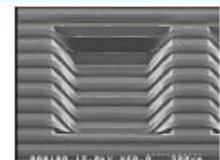
stealth dicing



TSV



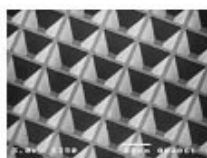
sacrificial layer etching



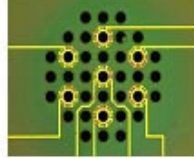
Dry film resist



Bonding



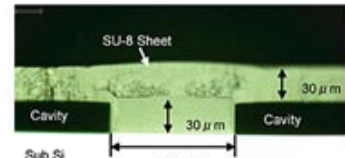
Wet etching



Metalization



Cantilever



Laminating