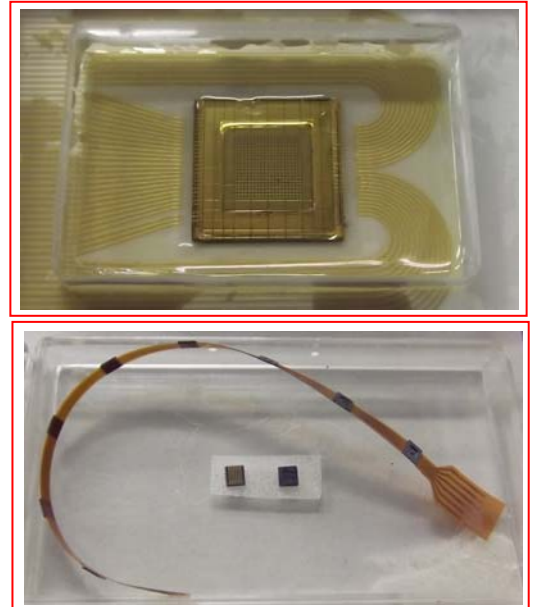
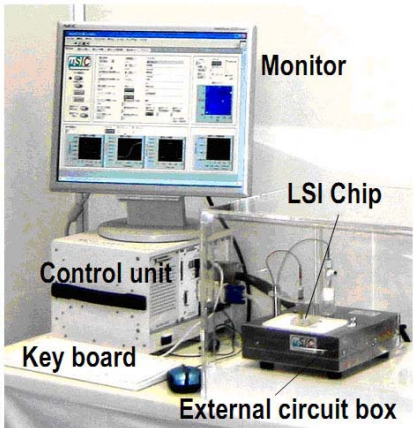
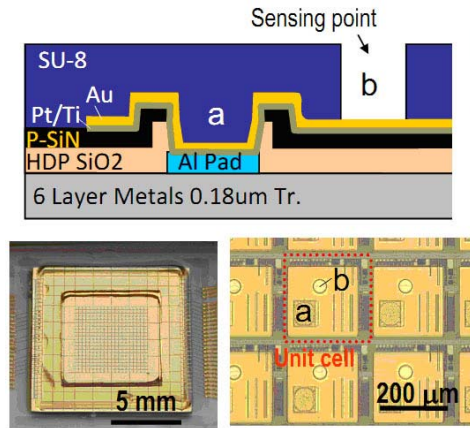
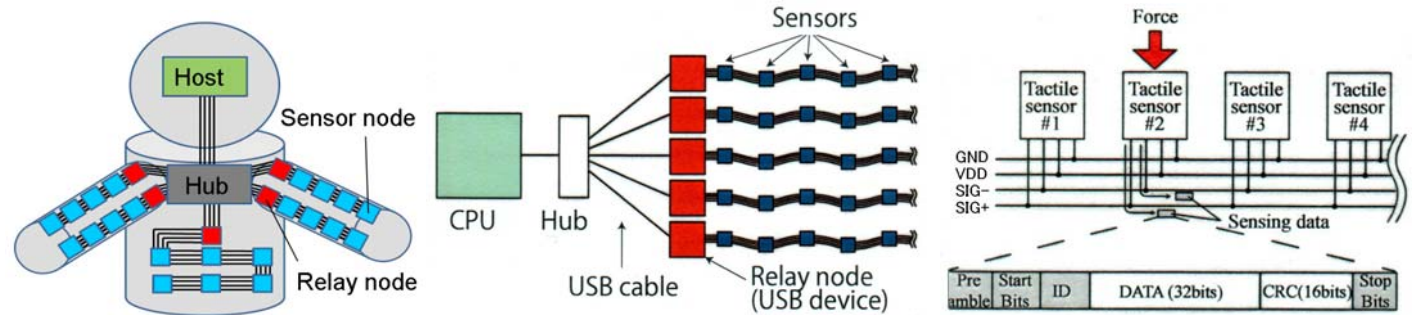


# Bio LSI and Tactile Sensor Network

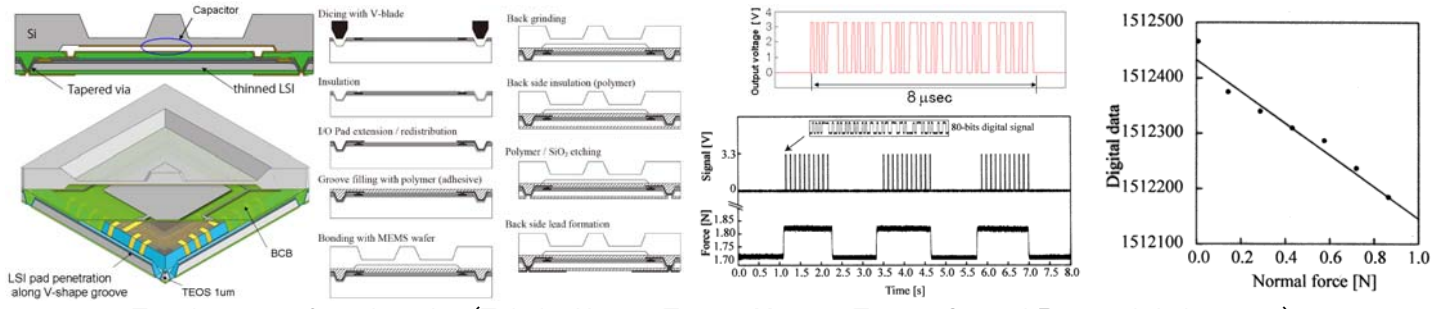
(Special Coordination Funds for Promoting Science and Technology, Formation of Innovation Center for Fusion of Advanced Technologies)



Bio LSI (Tohoku Univ. Matsue)

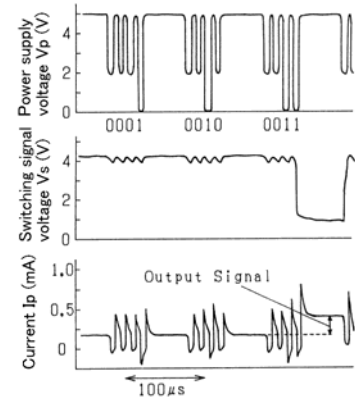
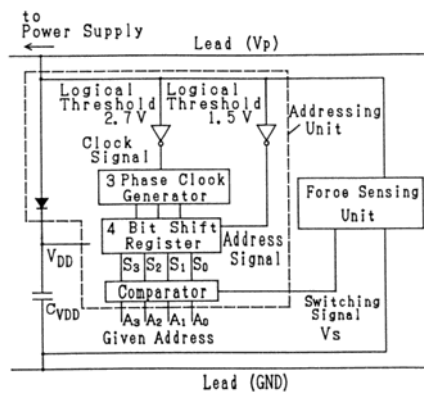
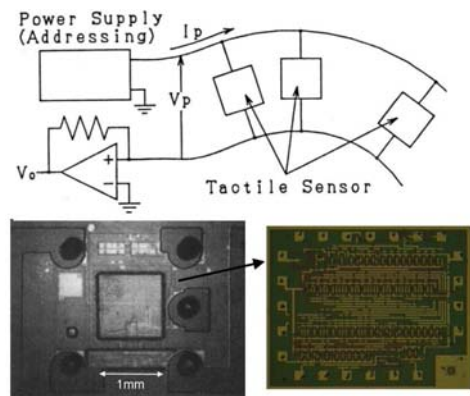


Event driven type tactile sensor network (Tohoku Univ. – Toyota Motor – Toyota Central Research Laboratory)



Tactile sensor for robot skin (Tohoku Univ. – Toyota Motor – Toyota Central Research Laboratory)

Reference : M.Muroyama, M.Makihata, Y.Nakano, S.Matsuzaki, H.Yamada, Ui.Yamaguchi, T.Nakayama, H.Nonomura, M.Fujiyoshi, S.Tanaka and M.Esashi, Development of an LSI for Tactile Sensor Systems on the Whole-Body of Robots, Trans. IEE of Japan, 131-E (2011) pp.302-309



Tactile sensor network with polling type common 2-wire

Reference : S.Kobayashi, T.Mitsui, S.Shoji and M.Esashi, Two-Lead Tactile Sensor Array Using Piezo-resistive Effect of MOS Transistor, Technical Digest of the 9th Sensor Symposium (1990) pp.137-140

