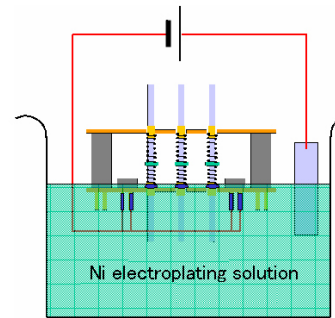
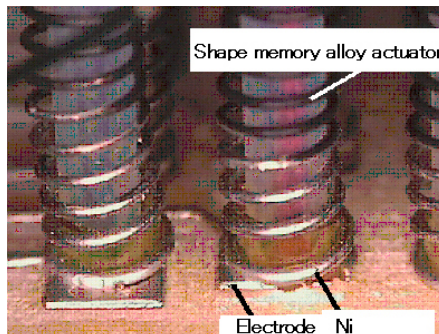
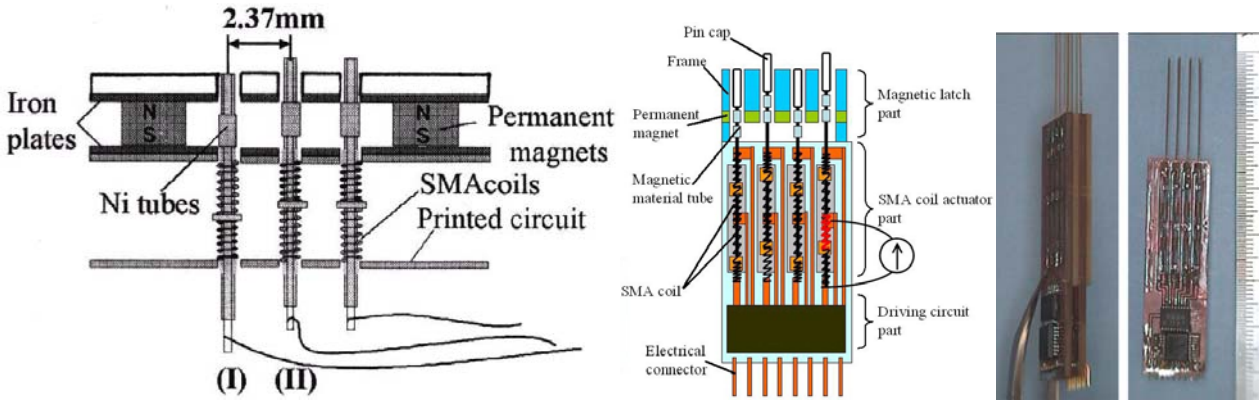
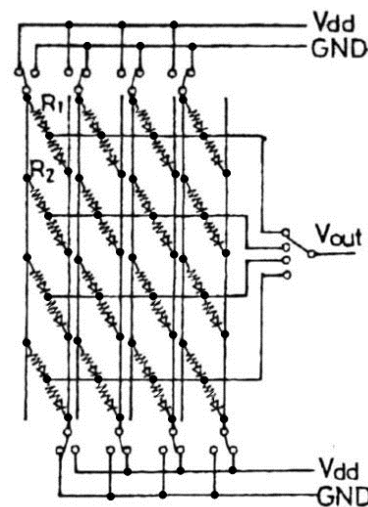
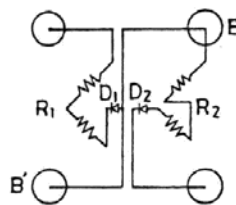
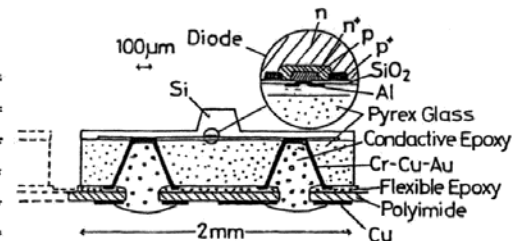
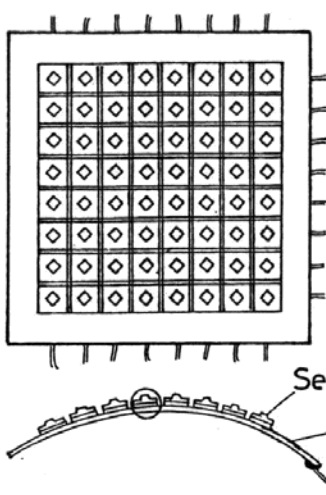
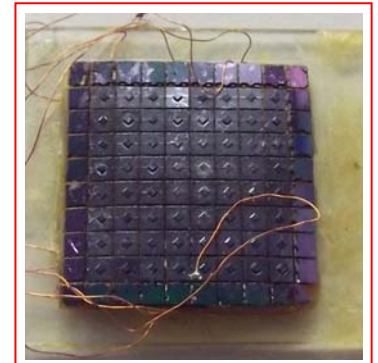
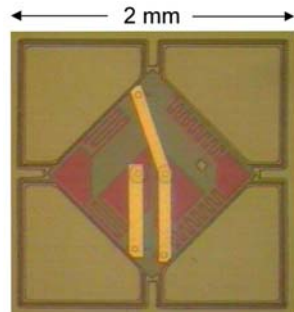
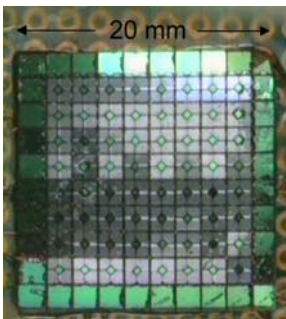


Tactile Display and Tactile Imager



Tactile display

Reference : Y.Haga, W.Makishi, K.Iwami, K.Totsu, K.Nakamura and M.Esashi : Dynamic Braille Display Using SMA Coil Actuator and Magnetic Latch, Sensors & Actuators A, 119 (2005) pp.316-322



Tactile imager

Reference : M.Esashi, S.Shoji, A.Yamamoto, and K.Nakamura, Fabrication of Semiconductor Tactile Imager, Electronics and Communications in Japan, Part 2, 73 (1990) pp.97-104