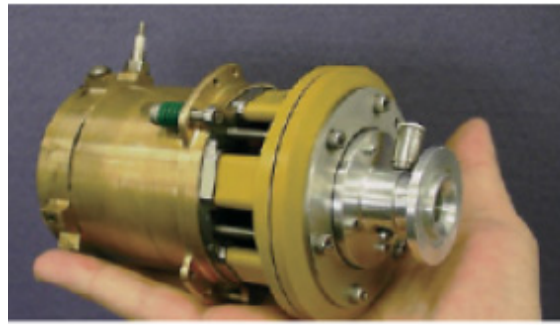
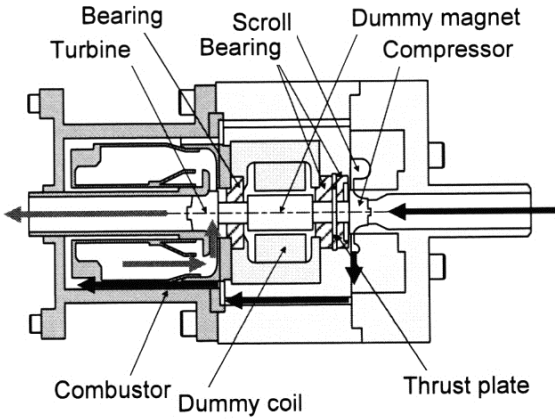
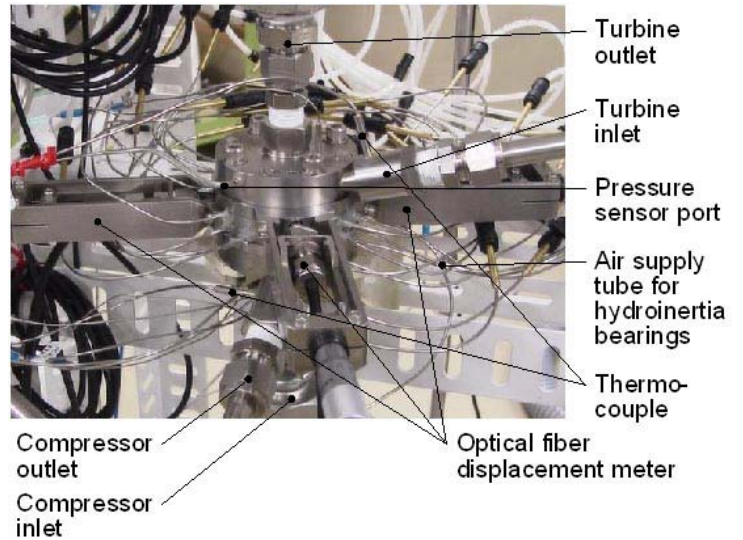
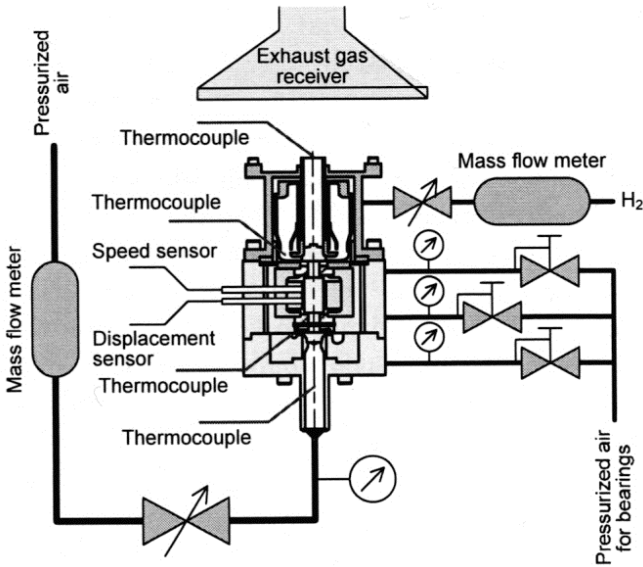


Small Size Gas Turbine Engine Dynamo



Gas turbine dynamo developed in IHI

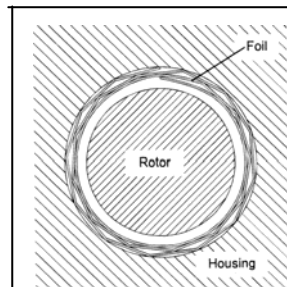
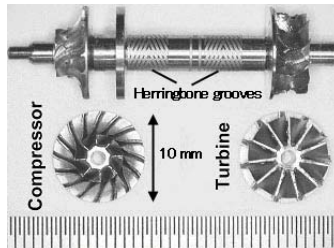


Small gas turbine dynamo (Tohoku Univ. - IHI Corp. - Tohoku-Gakuin Univ. - Tokyo Metropolitan Univ. - The Univ. of Tokyo) (for outdoor robot etc.)

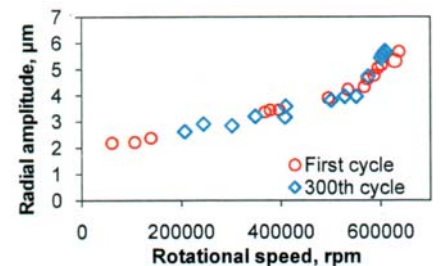
Reference : S.Tanaka, K.Hikichi, S.Togo, M.Murayama, Y.Hirose, T.Sakurai, S.Yuasa, S.Teramoto, T.Niino, T.Mori, M.Esashi and K.Isomura, World's Smallest Gas Turbine Establishing Brayton Cycle, Technical Digest, Power MEMS 2007 (2007) pp.359-362



5 axis stage high speed spindle milling machine used for shaping turbine blade (Toshiba machine F-MACH)



Radial foil bearing (Tohoku Univ. - IHI - Tohoku-Gakuin Univ.)



Reference : K.Hikichi, S.Togo, K.Isomura, N.Saji, M.Esashi and S.Tanaka, Ultra-high-speed Tape-type Radial Foil Bearing for Micro Turbomachinery, Technical Digests Power MEMS 2009 (2009) pp.79-82