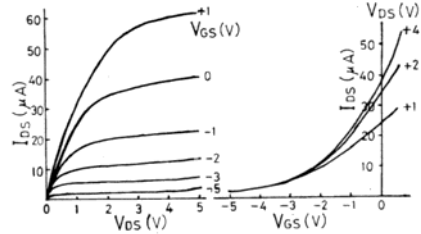
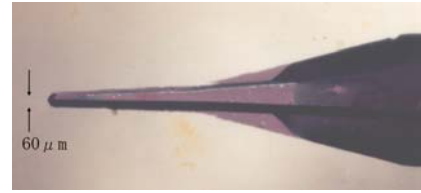
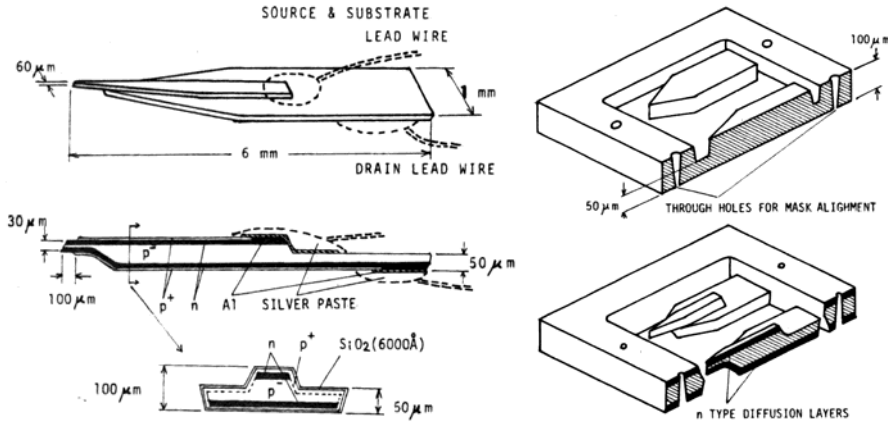
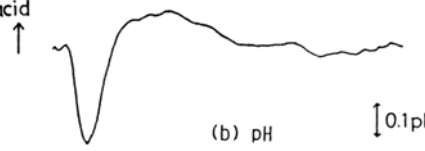
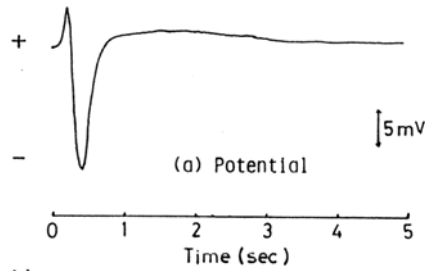
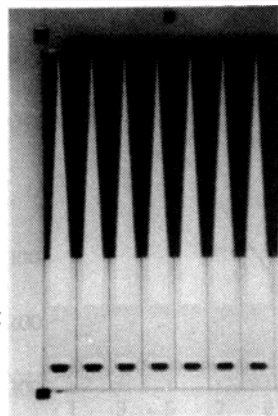
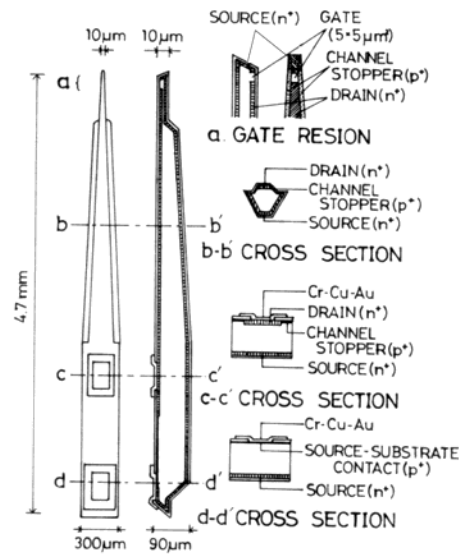
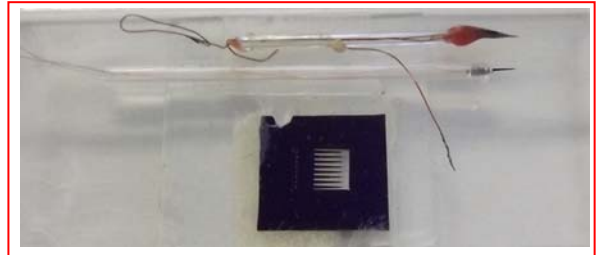


Micro ISFET and Integrated Micro Probe



Micro ISFET with 60 μm tip

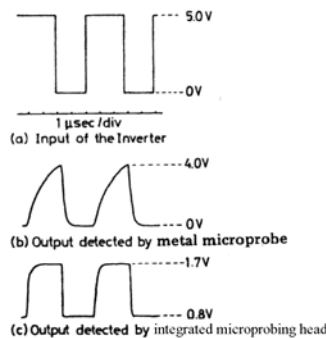
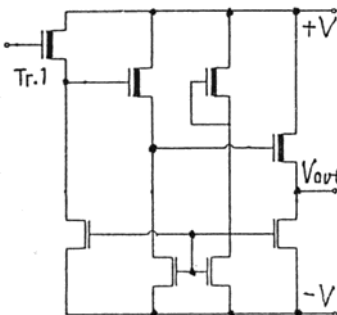
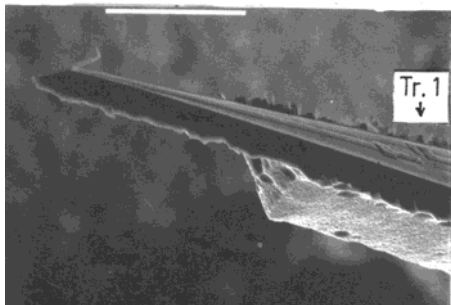
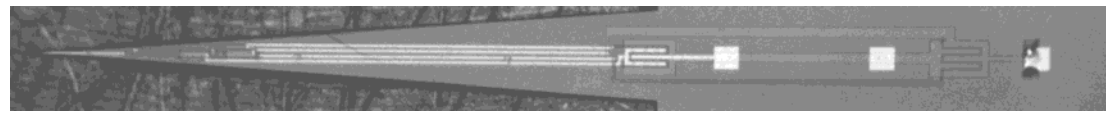
Reference : M.Esashi and T.Matsuo, Biomedical Cation Sensor Using Field Effect of Semiconductor, J. of the Japan Soc. of Applied Physics, 44, Supplement (1975) pp.339-343



Activation potential and pH after light stimulation

Micro ISFET with 10 μm tip

Reference : S.Shoji, M.Esashi and T.Matsuo, Prototype Micro ISFET for Biomedical Research, Electronics and Communications in Japan, Part 2, 69 (1986) pp.21-29



Integrated micro probe



Reference : S.Shoji, M.Esashi and T.Matsuo, Fabrication of an Integrated Micro Probing Head for Fault Analysis of MOS Integrated Circuits, Sensors & Actuators, 14 (1988) pp.125-132