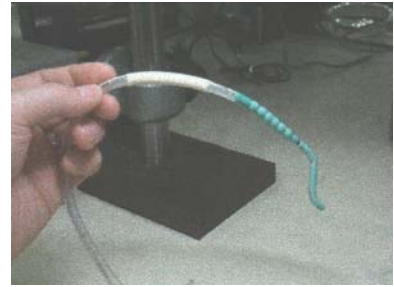
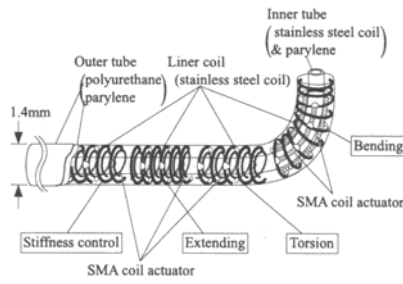
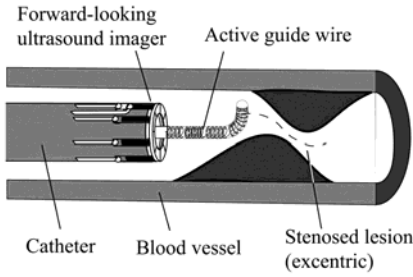


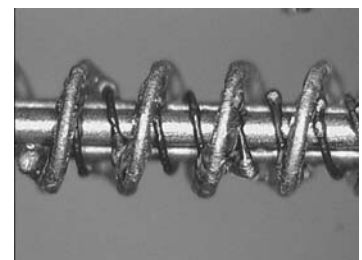
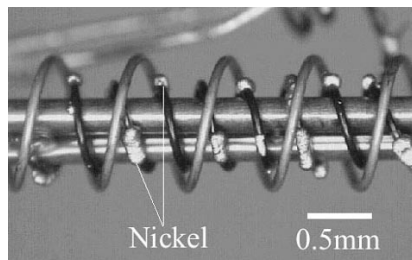
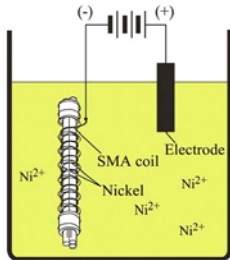
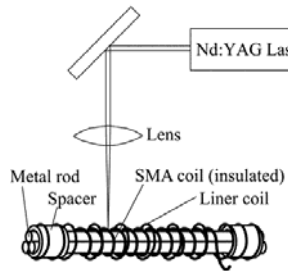
Active Catheter



Concept of multifunction active catheter

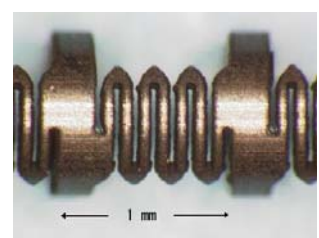
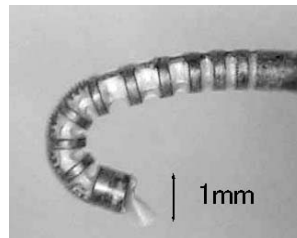
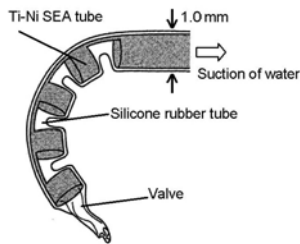
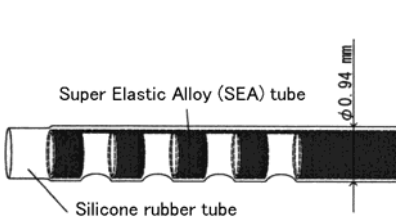
Active ileus tube

Reference : Y.Haga and M.Esashi, Biomedical Microsystems for Minimally Invasive Diagnosis and Treatment, Proc. of the IEEE, 92 (2004) pp.98-114



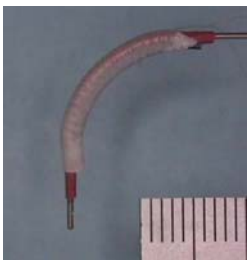
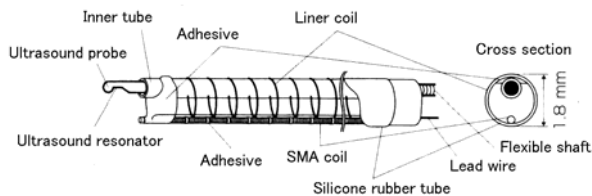
Assembly of multi-function active catheter using Shape Memory Alloy (SMA)

Reference : Y.Haga, M.Esashi, Assembly of Bending, Torsional and Extending Active Catheter Using Electroplating, Trans. IEE of Japan, 120-E (2000) pp.515-520



Suction type active catheter

Reference : Y.Muyari, Y.Mineta, T.Mineta and M.Esashi, Development of Hydraulic Suction Type Active Catheter Using Super Elastic Alloy Tube, Proc. of the 20th Sensor Symposium (2003) pp.57-60



Small diameter ultrasound image sensor with active bending mechanism using SMA

Reference : Y.Haga, Y.Tanahashi and M.Esashi, Small Diameter Active Catheter Using Shape Memory Alloy, Proc. of IEEE MEMS'98 (1998) pp.419-424

