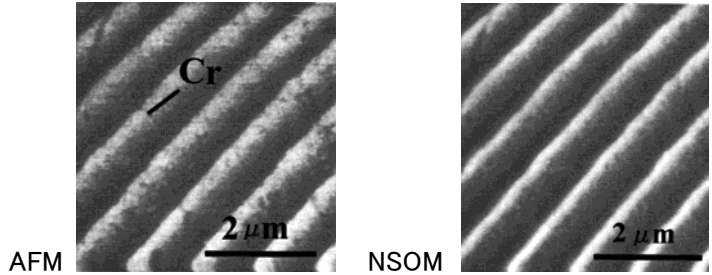
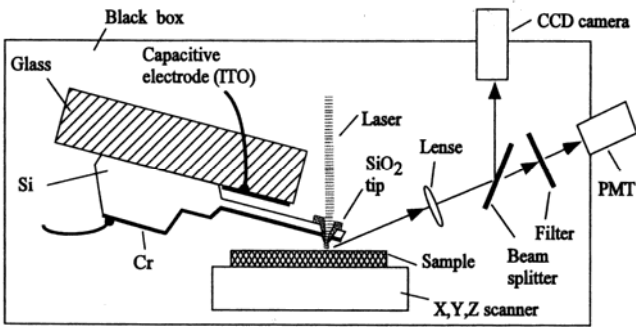
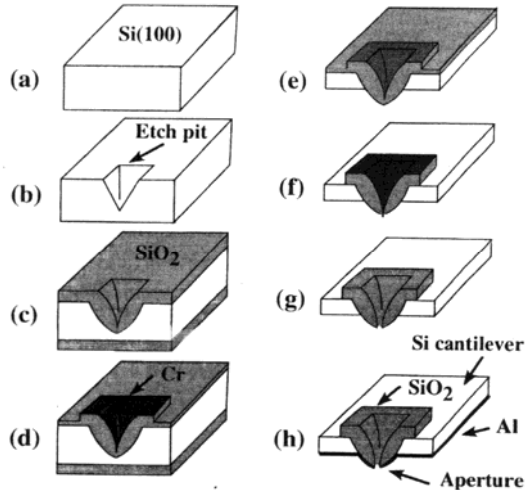
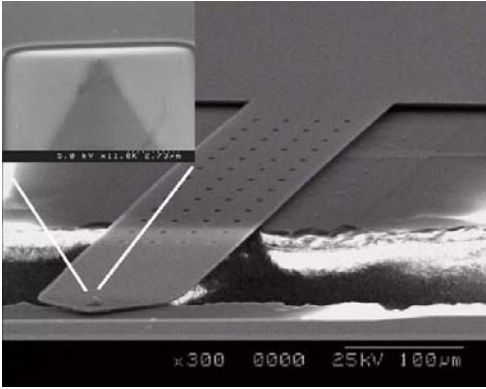
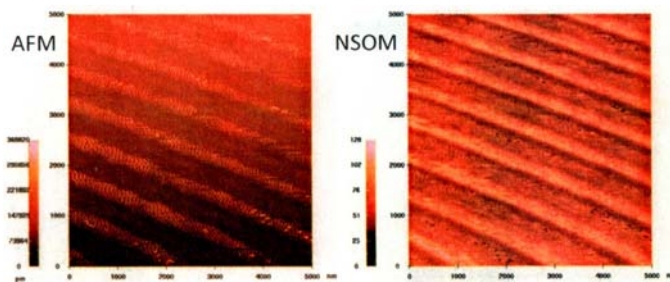
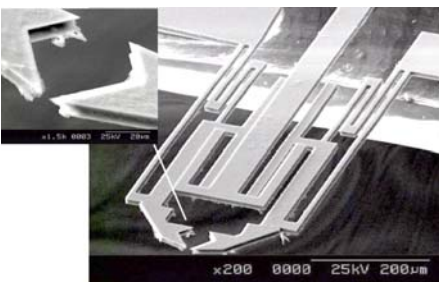
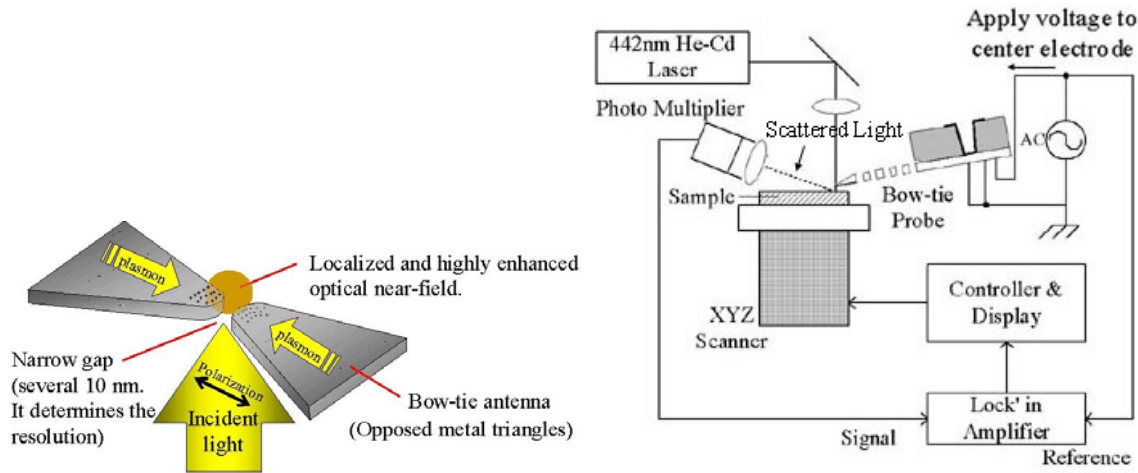


Near-field Optical Probe and Bow-tie Antenna



Probe for Near-field Scanning Optical Microscopy

Reference : P.N.Minh, T.Ono and M.Esashi, Microfabrication of Miniature Aperture at the Apex of SiO₂ Tip on Silicon Cantilever for Near-field Scanning Microscopy, Sensors and Actuators, A80 (2000) pp.163-169



Bow-tie antenna

Reference : K.Iwami, T.Ono and M.Esashi, Optical Near-field Probe Integrated with Self-aligned Bow-tie Antenna and Electrostatic Actuator for Local Field Enhancement, J. of Microelectromechanical Systems, 15 (2006) pp.1201-1208