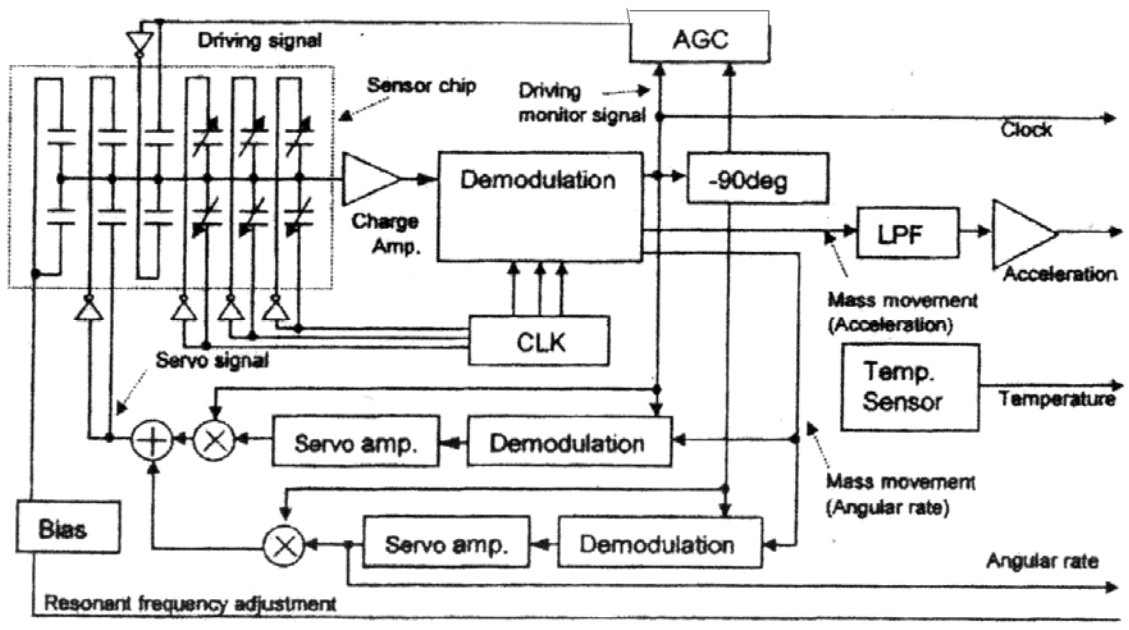
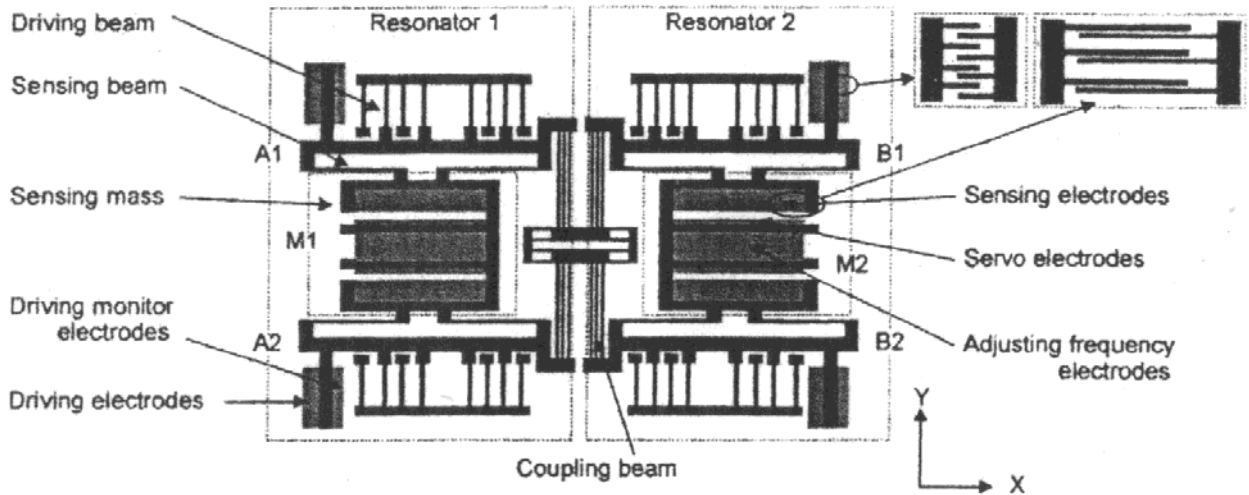
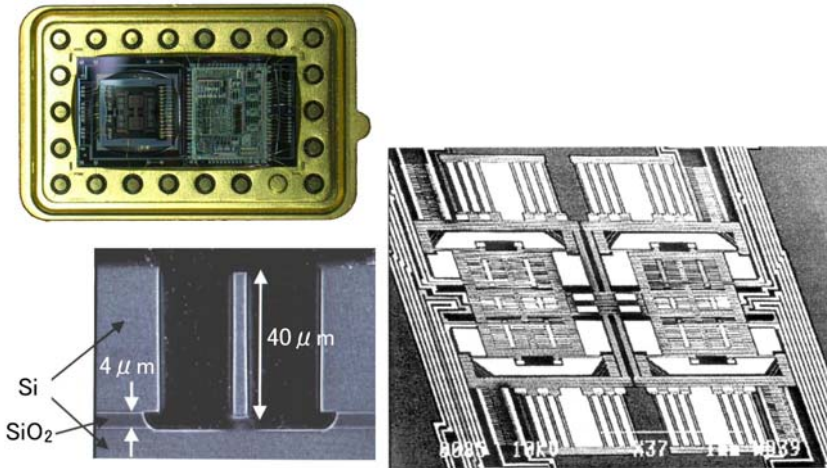


# Yaw Rate / Acceleration Sensor (Toyota Motor)

1992-1997

Two researchers from Toyota stayed in Tohoku University for collaborative development of resonating gyroscope



Reference : M.Nagao, H.Watanabe, E.Nakatani, K.Shirai, K.Aoyama and M.Hashimoto: A silicon micromachined gyroscope and accelerometer for vehicle stability control system, 2004 SAE World Congress, 2004-01-1113 (2004)