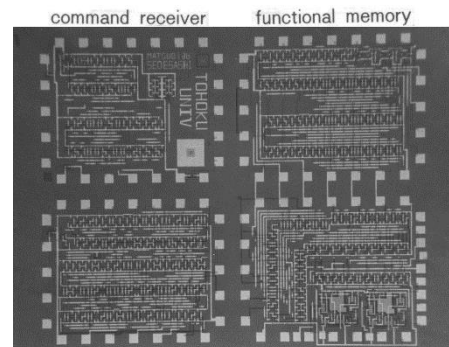
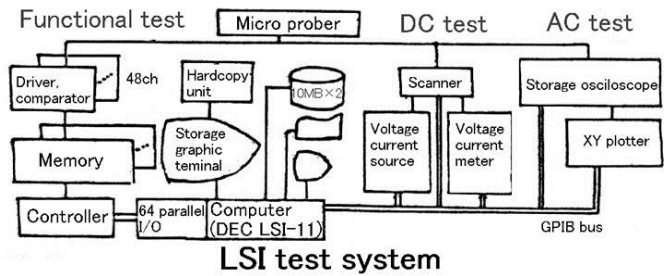
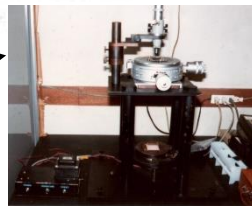
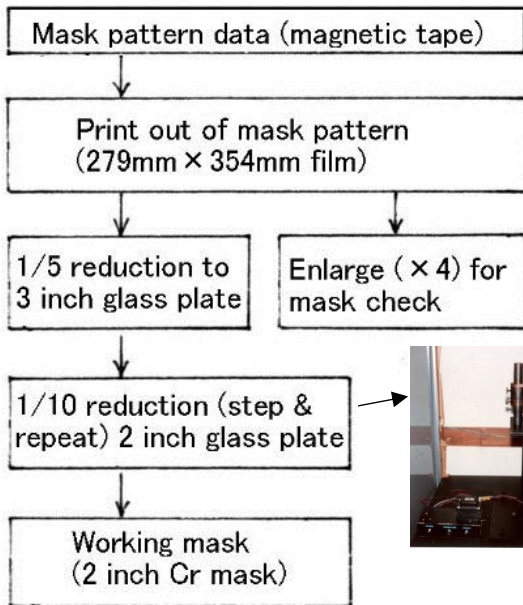
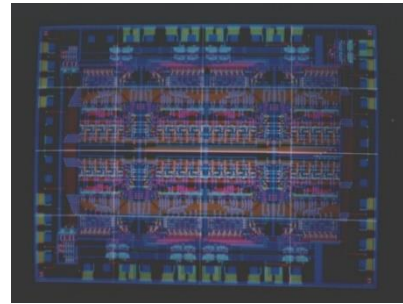
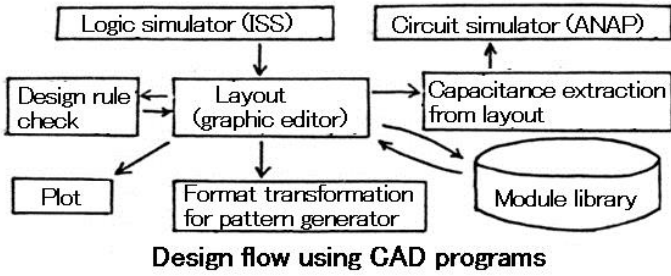
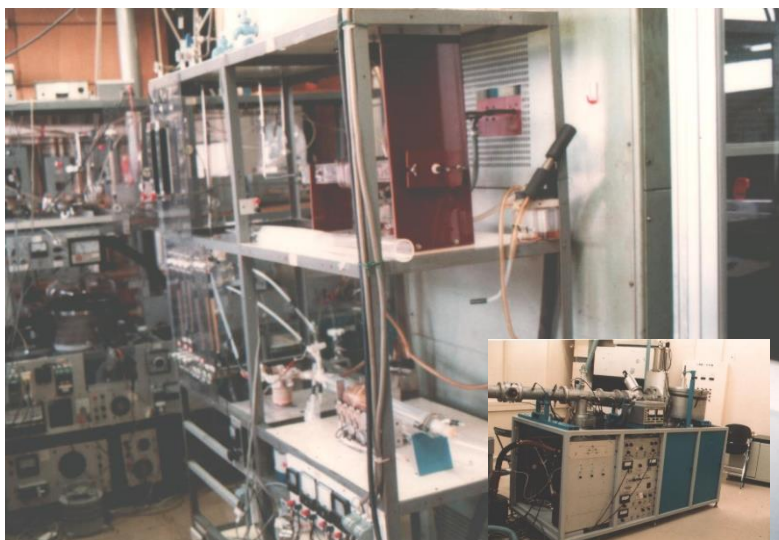


Design and prototyping of CMOS LSI

Yajima laboratory in Kyoto Univ. (network between universities)
 Computer center in Tohoku Univ. (time sharing system)

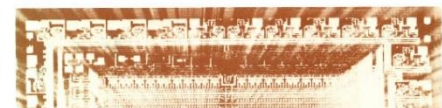


Implantable telemetry LSI
 (H.Seo, M.Esashi and T.Matsuo,
 Manufacture of Custom CMOS LSI for an
 Implantable Multipurpose Biotelemetry
 System, Frontiers of Medical and Biological
 Engineering, 1 (1989) 319)



Facility for LSI fabrication in 1980's Second-hand Ion implanter

Details can be seen in 3F "Process equipment display room (Design and fabrication of CMOS IC using equipment made-in-house)"



(M.Esashi, Basics of Semiconductor Integrated Circuit Design, (1986) Baihukan)