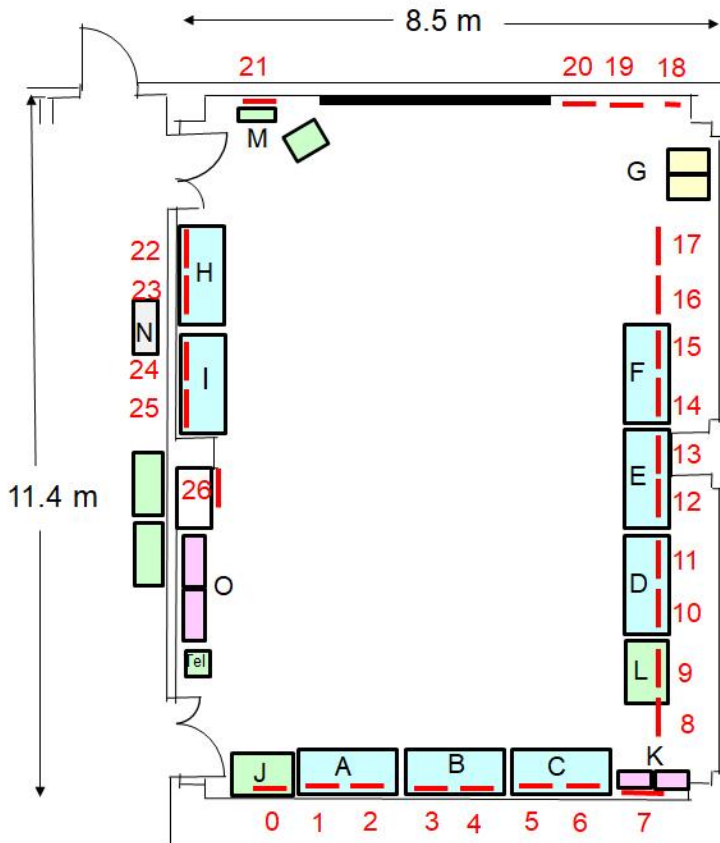


# Sendai MEMS showroom



Desk J : IR imager, Range imager using optical scanner

Case A :DMD and ink jet printer, Images and optical MEMS

Case B : Pressure sensor and accelerometer, Gyroscope

Case C : RF MEMS, Nanomachining

Rack K : Design and fabrication of CMOSLSI

Desk L : Ion sensitive FET (ISFET)

Case D : Medical micro sensor, Micro fluidics

Case E : Heterogeneous integration (MEMS on LSI), Harsh environment devices

Case F : Power MEMS, Actuators

Case G : Fraunhofer institute

Desk M : iCAN (MEMS application contest)

Case H : MEMS park consortium,  $\mu$ SIC open collaboration

Desk N : Infrared sensor array

Case I : IMEC

Rack O : Award

Poster 0 : What is MEMS ?

Poster 1 : Optical MEMS and Micro/Nano-Optics

Poster 2 : PZT thin films for MEMS

Poster 3 : Micromachining and packaging

Poster 4 : Mechanical sensors

Poster 5 : RF MEMS

Poster 6 : Nanomachining

Poster 7 : Design and prototyping of CMOS LSI

Poster 8 : Sensor network

Poster 9 : Micro sensors for medical monitoring

Poster 10 : Minimally invasive medical devices and health care devices

Poster 11 : Tactile sensor network

Poster 12 : Heterogeneous integration of MEMS on LSI by transfer

Poster 13 : Development of massive parallel EB exposure system

Poster 14 : Power MEMS

Poster 15 : MEMS for production, testing, environment and safety

Poster 16 : Advantest

Poster 17 : Ricoh

Poster 18 : U.C.Berkeley (BSAC)

Poster 19 : Fraunhofer institute (FhG)

Poster 20 : Fraunhofer project center in Tohoku university

Poster 21 : iCAN

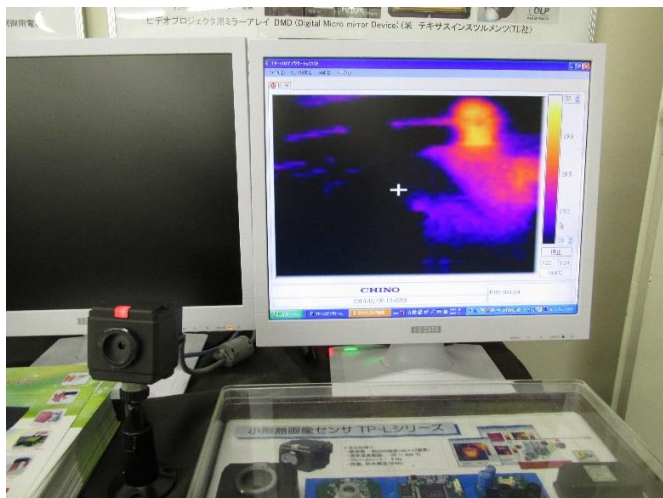
Poster 22 : MEMS park consortium (MEMSPC)

Poster 23 : Open collaboration by  $\mu$ SIC

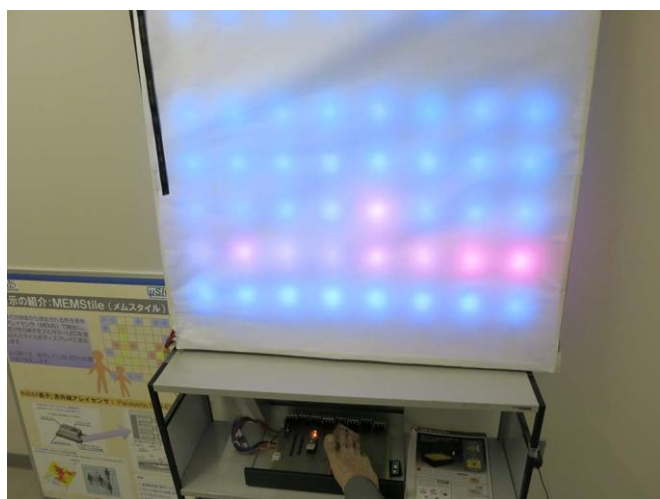
Poster 24 : IMEC (Home of SiGe MEMS)

Poster 25 : IMEC (MEMS for energy harvesters & electronic nose)

Poster 26 : Examples of MEMS Industrialization by Tohoku Univ. – industry Collaboration



Awards(M.Shoji, M.Moriyama, K.Totsu, K.Honma(MEMS Core)), Range imager(Nippon signal), Thermal imager(Chino)



ISFET honored "Denki no ishizue" by IEEJ in 2017

8 × 8 infrared sensor array "MEMStile" (Panasonic)