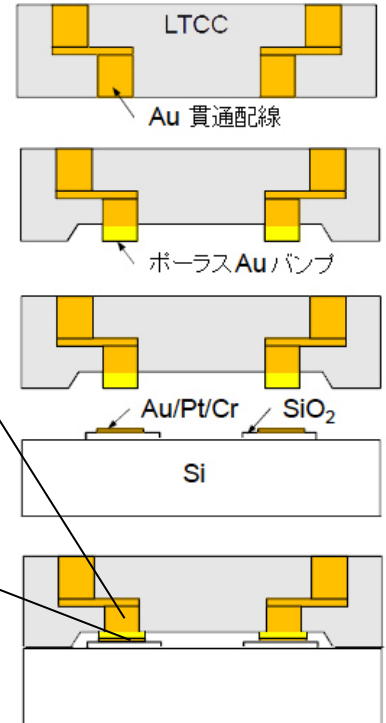
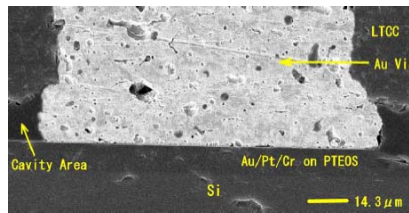
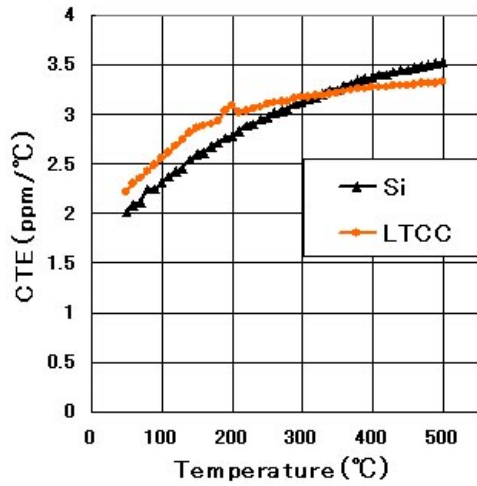
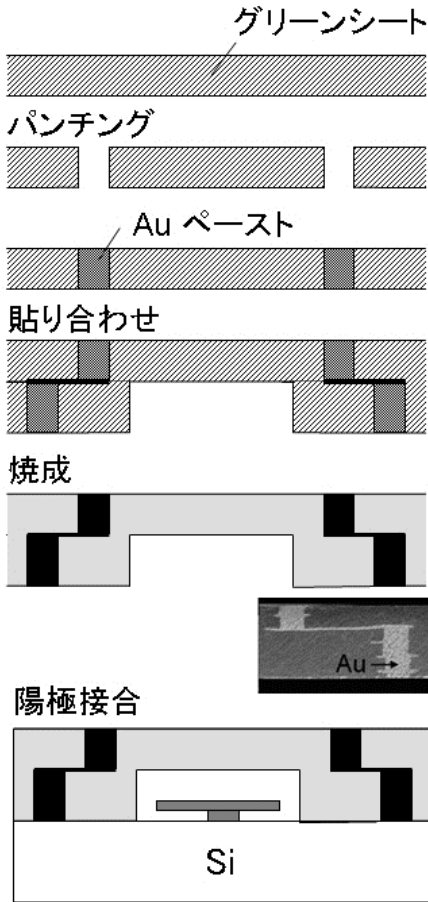
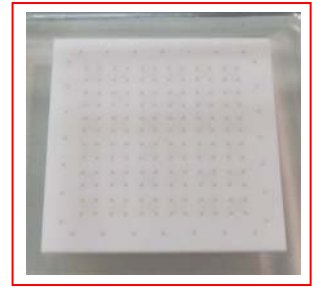
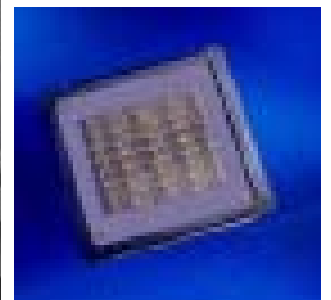
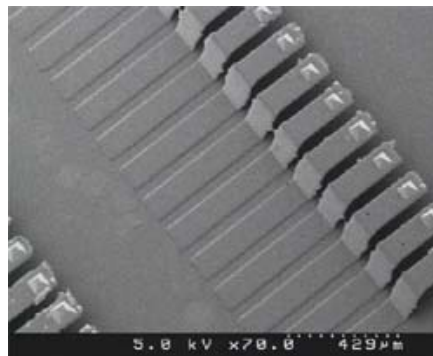
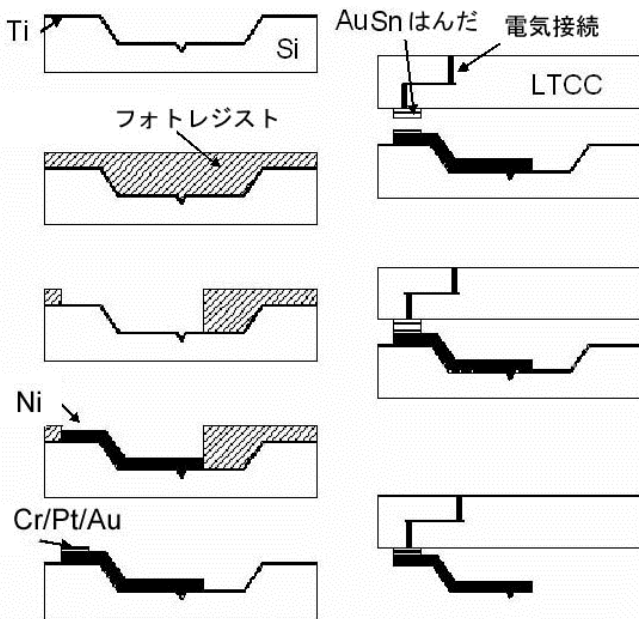


陽極接合できる LTCC 貫通配線基板 (ニッコー)



陽極接合できる LTCC(低温焼成セラミックス)貫通配線基板とポラス Au による電気接続 (ニッコー - 東北大)

参考文献 : M.Mohri, A.Okada, H.Fukushi, M.Esashi and S.Tanaka, Packaging Technology for Hermetic Sealing with Electrical Connection Using Anodically-Bondable LTCC Substrate with Etched Cavities, The 28th Sensor Symposium on Sensors, Micromachines and Applied Systems (2011) p.62



LTCC 基板を用いたウェハレベルバーンイン用プローブカード

参考文献 : S.-H.Choe, S.Tanaka and M.Esashi, A Matched Expansion MEMS Probe Card with Low CTE LTCC Substrate, IEEE International Test Conference 2007 (2007) Paper 20.2