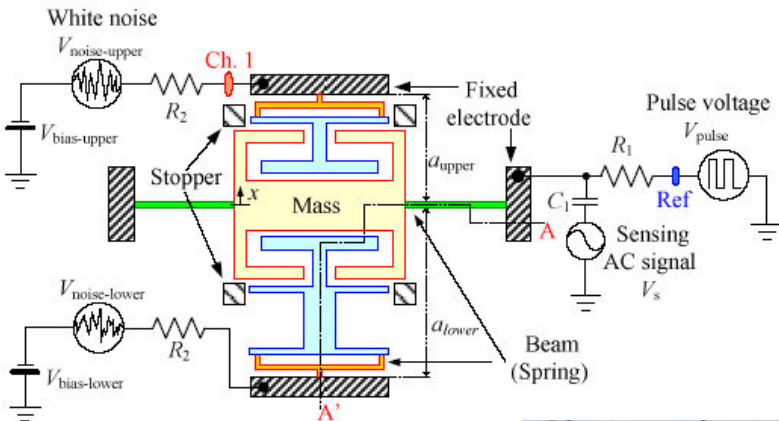
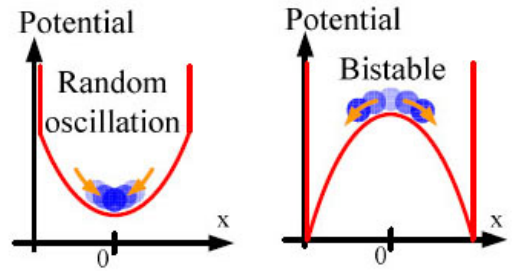
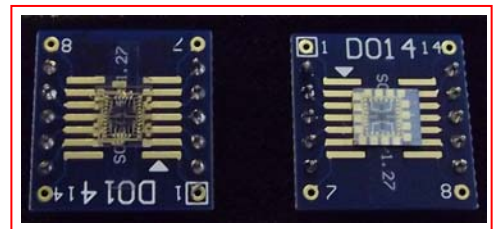


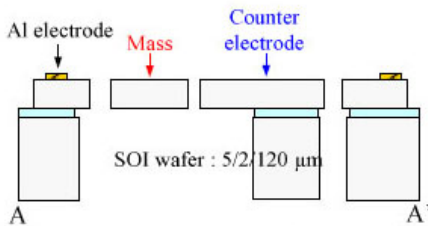
# 耐環境センシング



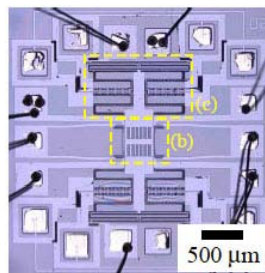
(a) Planar structure



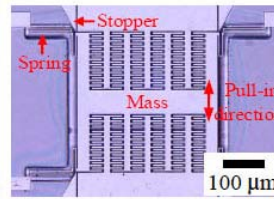
(a)  $V_{pull-in}$  is zero or low. (b)  $V_{pull-in}$  is high.



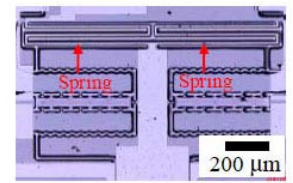
(b) Cross-sectional structure



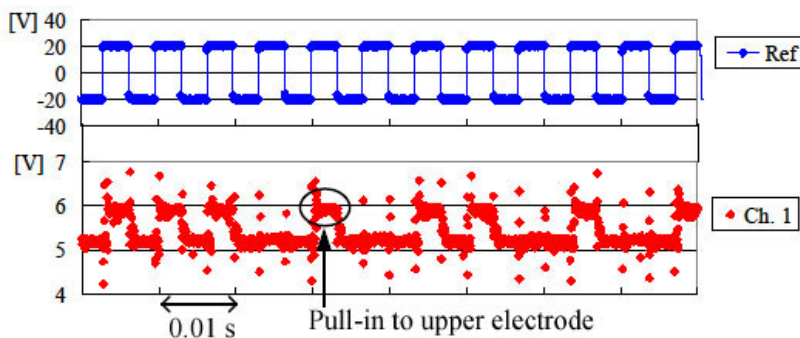
(a) Overall top view



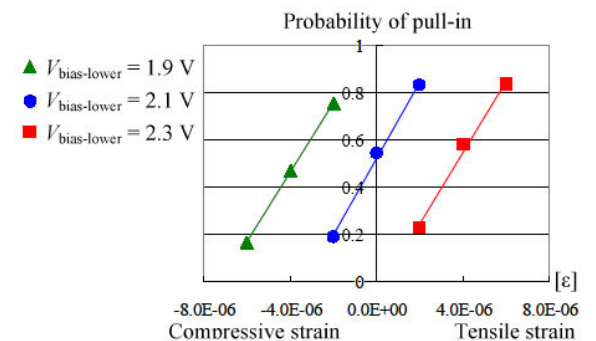
(b) Magnified view of the mass



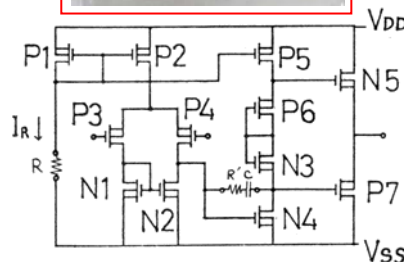
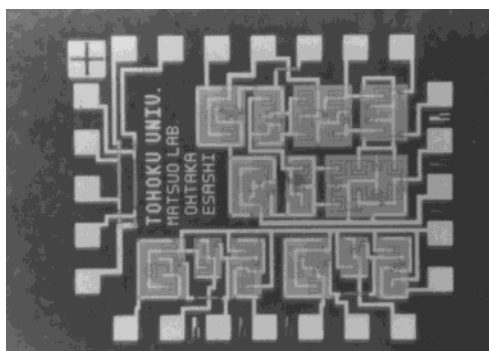
(c) Magnified view of springs supporting counter electrode



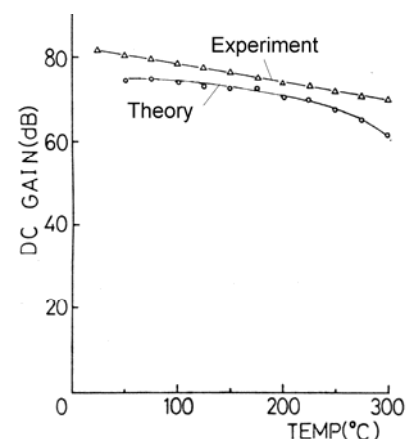
確率型センサ



参考文献 : Y.Hatakeyama, M.Esashi and S.Tanaka, Stochastic Gravity Sensor with Robust Output Using White-Noise-Applied Vi-Stable State for Low S/N Environments, Tech. Digest IEEE MEMS 2012 (2012) pp.132-135



SOS (Silicon On Sapphire) CMOS による高温用オペアンプ



参考文献 : 江刺正喜, 大高章二, 松尾正之, 高温用集積回路と高温用圧力センサの試作, 電子通信学会半導体トランジスタ研究会, SSD86-57 (1986) pp.67-74