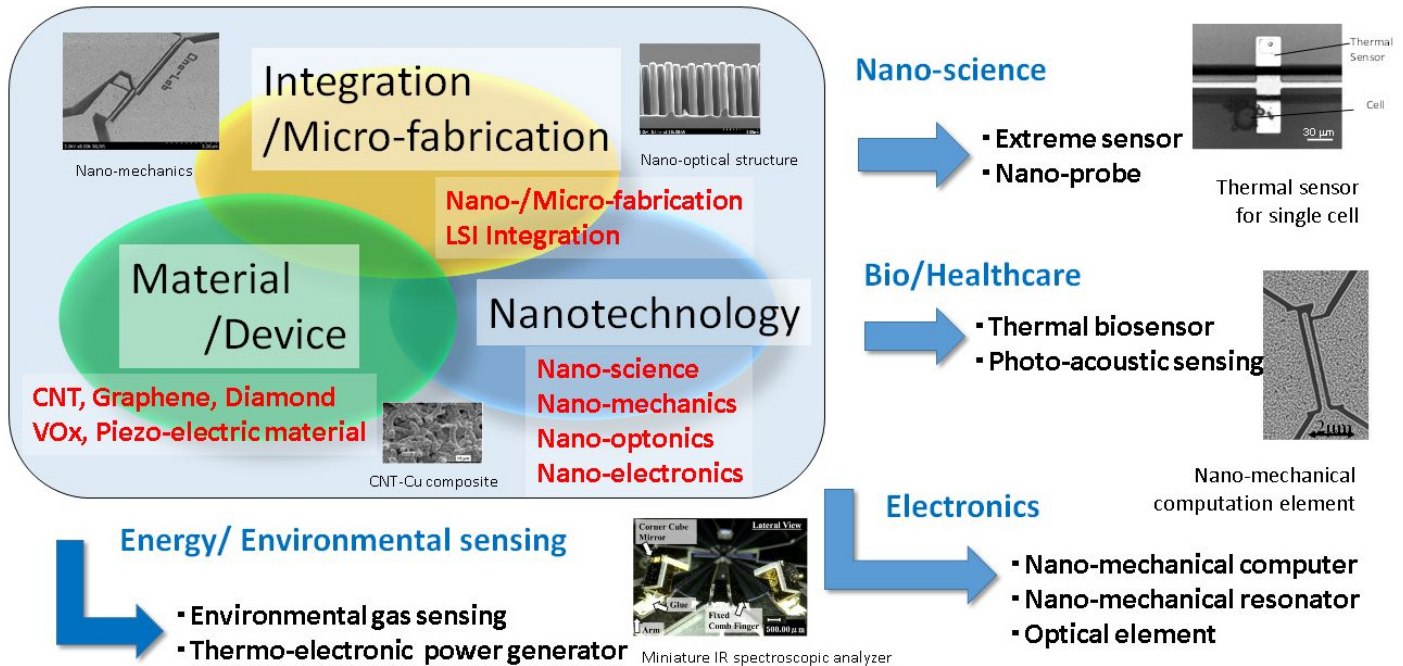


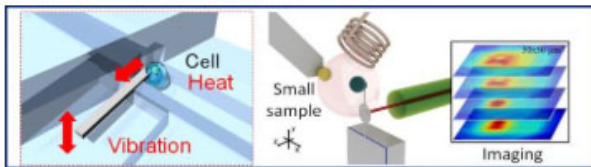
6 Nanomachining and ultra-high sensitive sensing

Graduate School of Engineering
Department of Mechanical Systems Engineering
Ono·Toan Lab. / Toda Lab.

We have developed micro/nanomechanics and related technologies based on nanotechnology and microfabrication for information technology, bio-medicals, energy, environments and nanoscience. In addition, ultimate sensor and sensing technologies have been developed and applied to new applications.



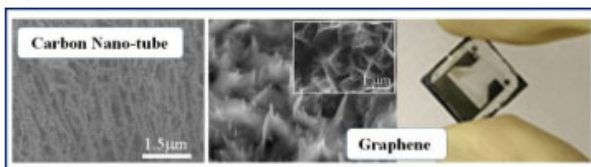
Ultimate Sensing, Spintronics



Micro/Nano Energy Systems, Wearable



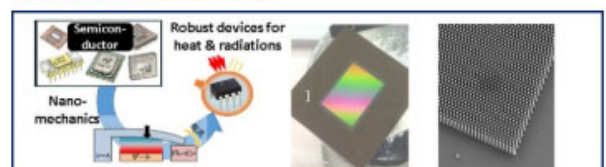
Genious Materials for Micro/Nano Systems



IoT Sensors, Miniature Systems



Nanomechanics, Quantum electromechanics



Healthcare, Bio-Applications

