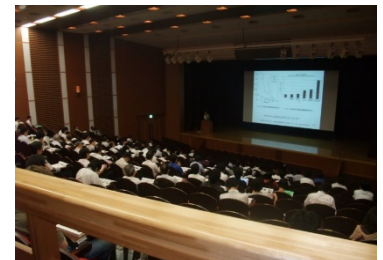


Who we are

MEMS Park Consortium is the voluntary association aimed at supporting R&D and industrialization of MEMS technology through networking among domestic and foreign R&D supporting organization by industry–government–academia alliance.

Our Organization

- Representative: Prof. Masayoshi Esashi (Tohoku Univ.)
- Originator: Tohoku Univ. City of Sendai, Miyagi Prefectural Government, Tohoku Bureau of Economy, Trade and Industry
- Membership: Financial member (66 companies), Partner member (10 groups)



MEMS Intensive Course in Kyoto (2011)

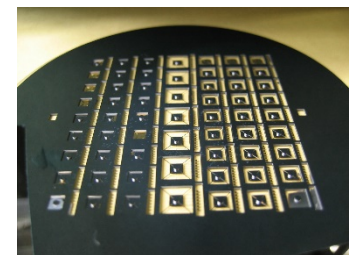
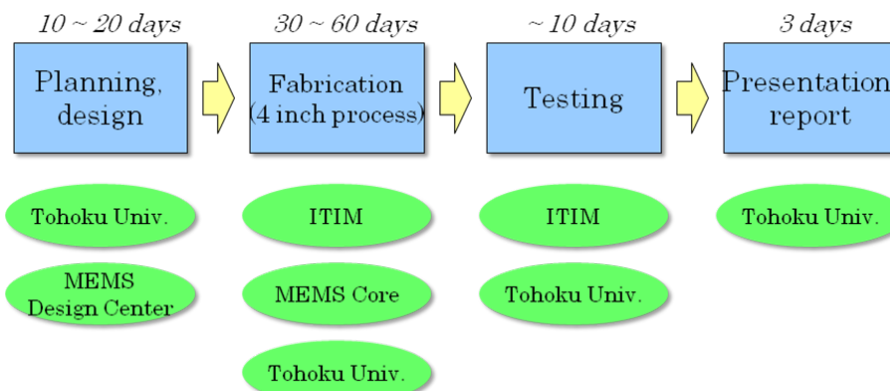
Our Activities

◆ Information Dissemination

Disseminate information about micro technology by organizing MEMS Intensive Course, Open Seminars, MEMS Engineer Forum, by utilizing website, mailing list, twitter and participating in Exhibitions.

◆ Human Resource Development

1. MEMS Training Program for Researchers and Developers (as needed)



Three axis capacitive accelerations sensor achieved by a trainee



Domestic contest for iCAN2012

Comprehensive MEMS training program for three months containing planning, design, fabrication, testing, report. Trainees propose a targeting MEMS device and carry on the process fabrication by themselves, under full-support service by Tohoku University, Industrial Technology Institute, Miyagi Prefecture and MEMS Core.

➤ Trainees

RICOH, MEMS CORE, PENTAX, ADVANTEST, ALPS ELECTRIC, NIPPON DENPA, SYSTEC INOUE, YAMAHA, TOPPAN, KONICA MINOLTA, SEKISUI, MURATA, FUJI MACHINE, DENSO, AHIKO FINETECH, YAMAMOTO ELECTRIC WORKS, JAXA

➤ Targeting devices

Optical scanner, Gyro, Micro probe, RF switch, Acceleration sensor, RF relay, Pressure sensor, Micro 2D stage, Variable inductor, Variable capacitor

2. Human Resource Development for young people

Organize domestic contest for *International Contest of Application in Nano/Micro Technology (iCAN)*.

◆ Technical Support (Network for Experimental Production Support)

Support member companies by serving as an intermediary between a member company who has obstacles to R&D or industrialization in MEMS technology and universities or public R&D institutes.

◆ Networking

Offer a place to information exchange among member companies.